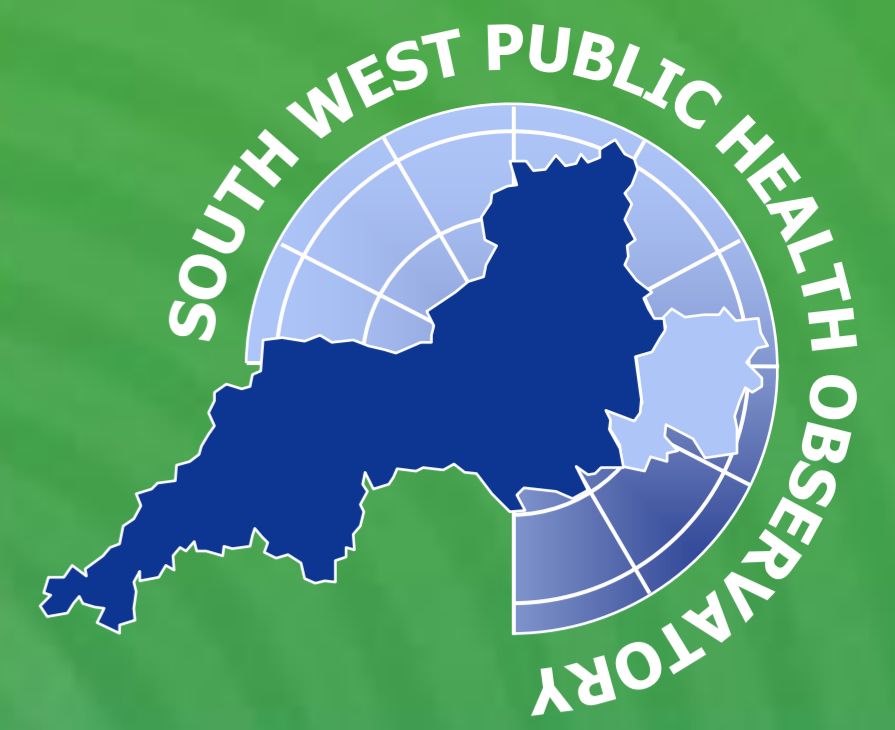


Results of the National Childhood Measurement Programme in the South West



Jenny Weeks, jenny.weeks@swpho.nhs.uk
South West Public Health Observatory

Background: The National Child Measurement Programme (NCMP) weighs and measures all primary school children in Reception (age 4–5 years) and Year 6 (age 10–11 years).

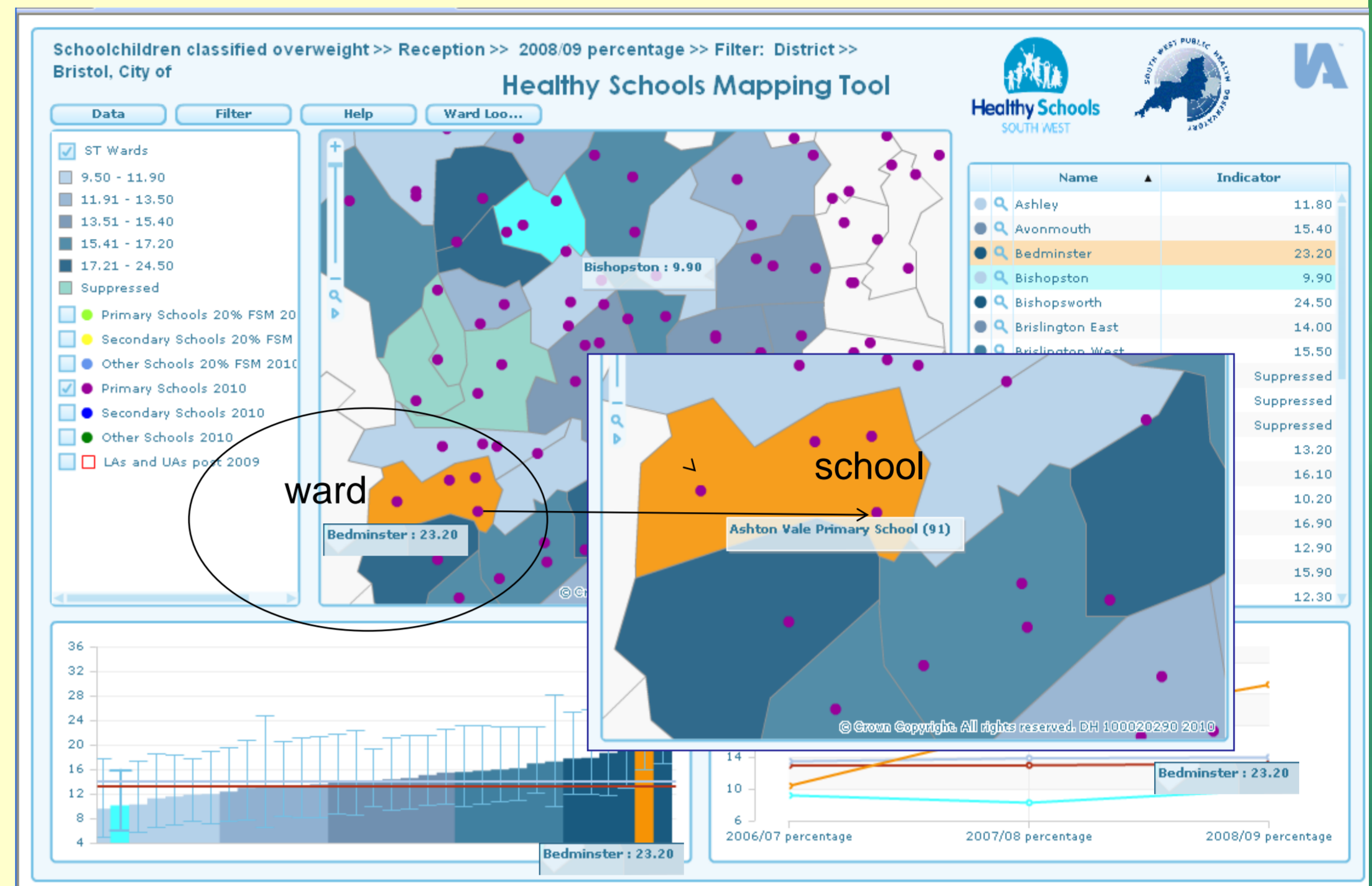
Aim: To use the NCMP data to identify inequalities and produce a user-friendly ward level mapping tool to enable local professionals to target interventions.

Method: NCMP database for 2008/09 was analysed and the new Instant Atlas mapping tool developed. Raw data for 2009/10 has not yet been released, so the latest rurality and deprivation data for the South West are for 2008/09.

Results: Obesity levels among children in Year 6 are almost double those in Reception (Fig 2). Boys have higher obesity prevalence than girls (Fig 3) and so do children living in urban areas compared to those in rural settings (Fig 4). Urban Year 6 children have the smallest differences between the sexes. There are almost 10% more overweight or obese Reception children living in the most deprived decile than the least deprived decile (Fig 5).

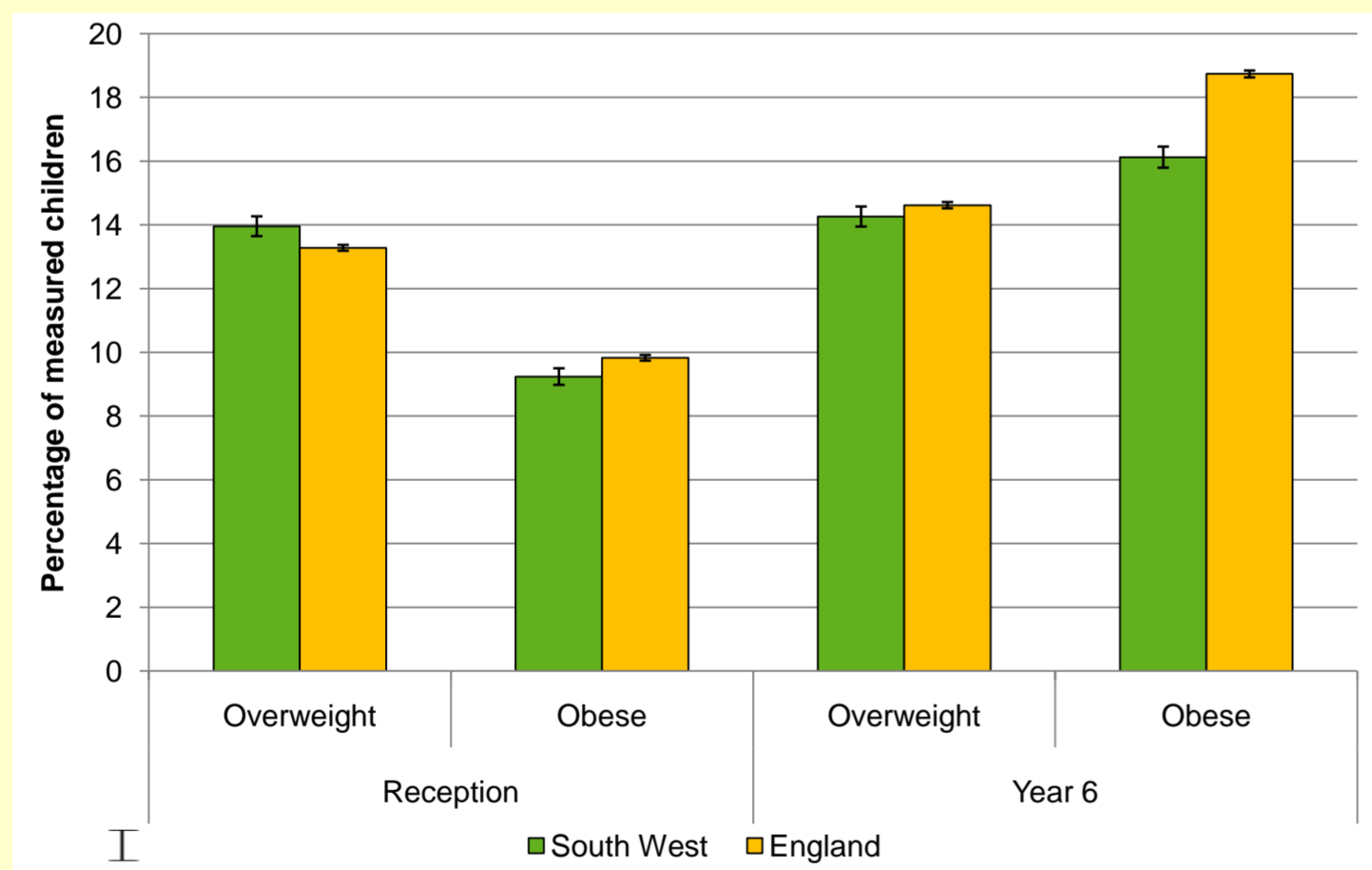
Conclusion: The mapping tool helps to identify areas of high need so that resources can be targeted. The school ward locator aids finding schools.

Fig 1: Health Schools Mapping Tool showing percentage overweight children in Reception by ward in Bristol



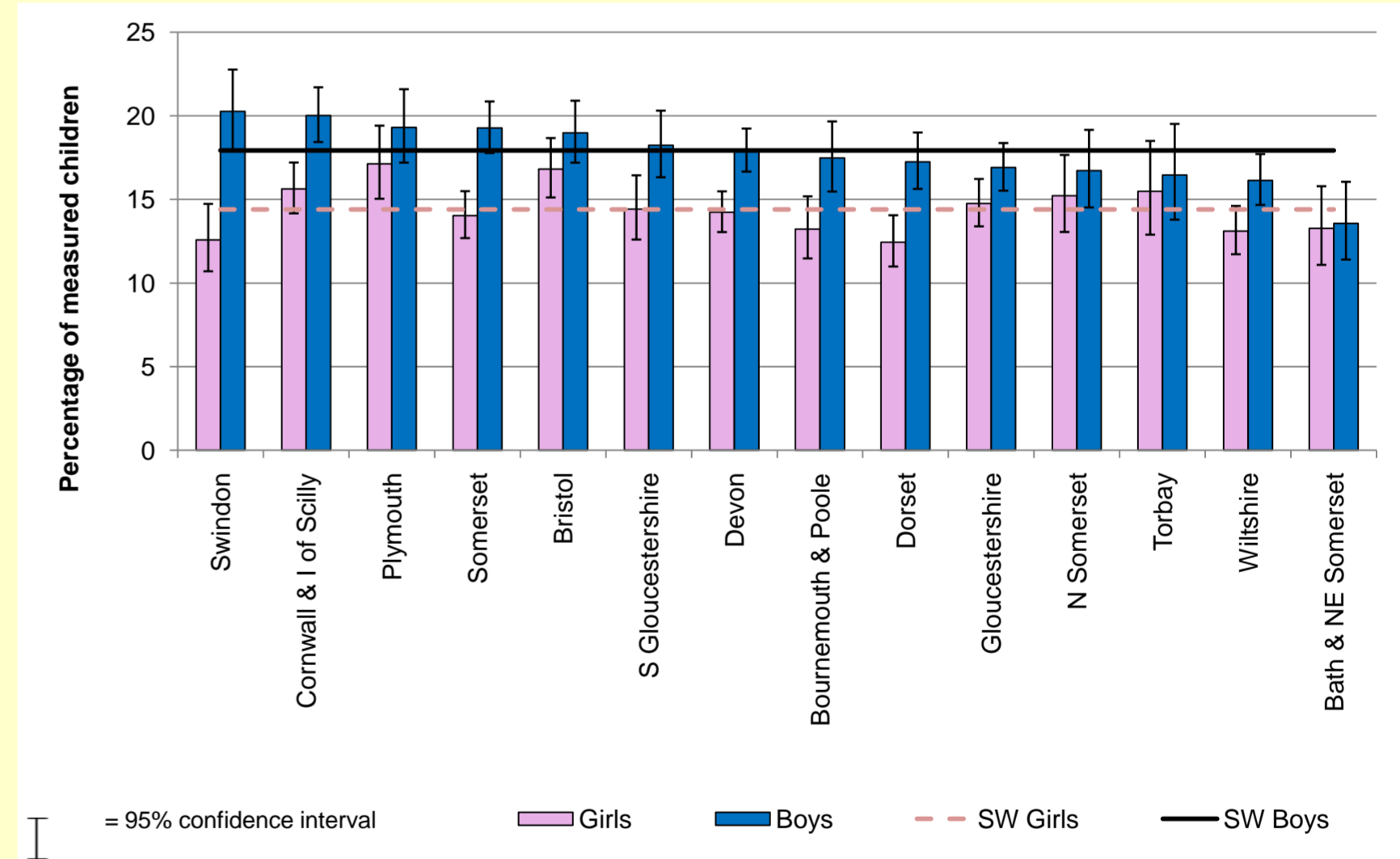
Source: South West Public Health Observatory <http://www.swpho.nhs.uk/default.aspx?RID=35469>

Fig 2: Percentage of overweight and obese children in the South West and England, 2009/10



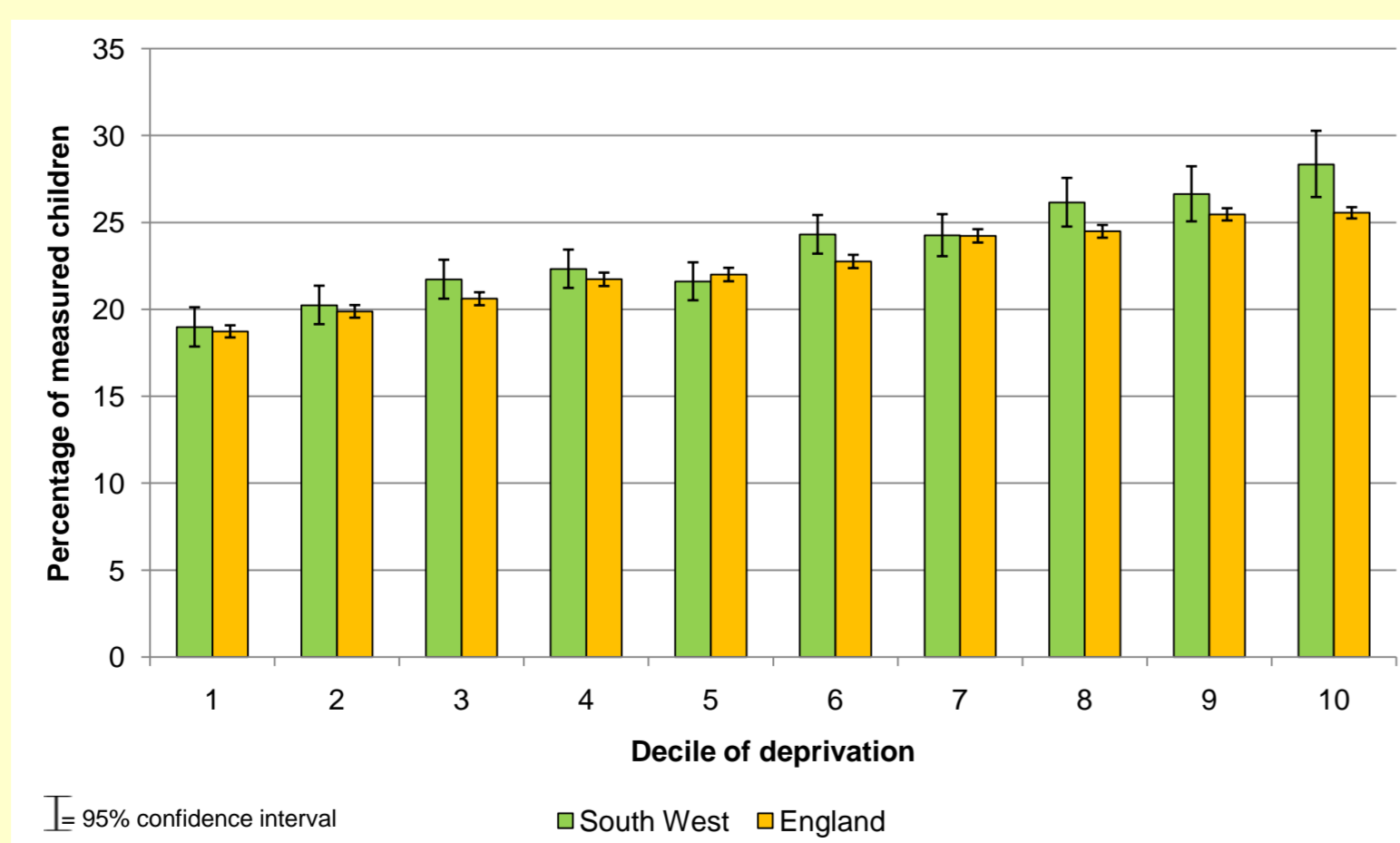
Source data: The Health and Social Care Information Centre, NCMP

Fig 3: Percentage of obese girls and boys by PCT in the South West, 2009/10



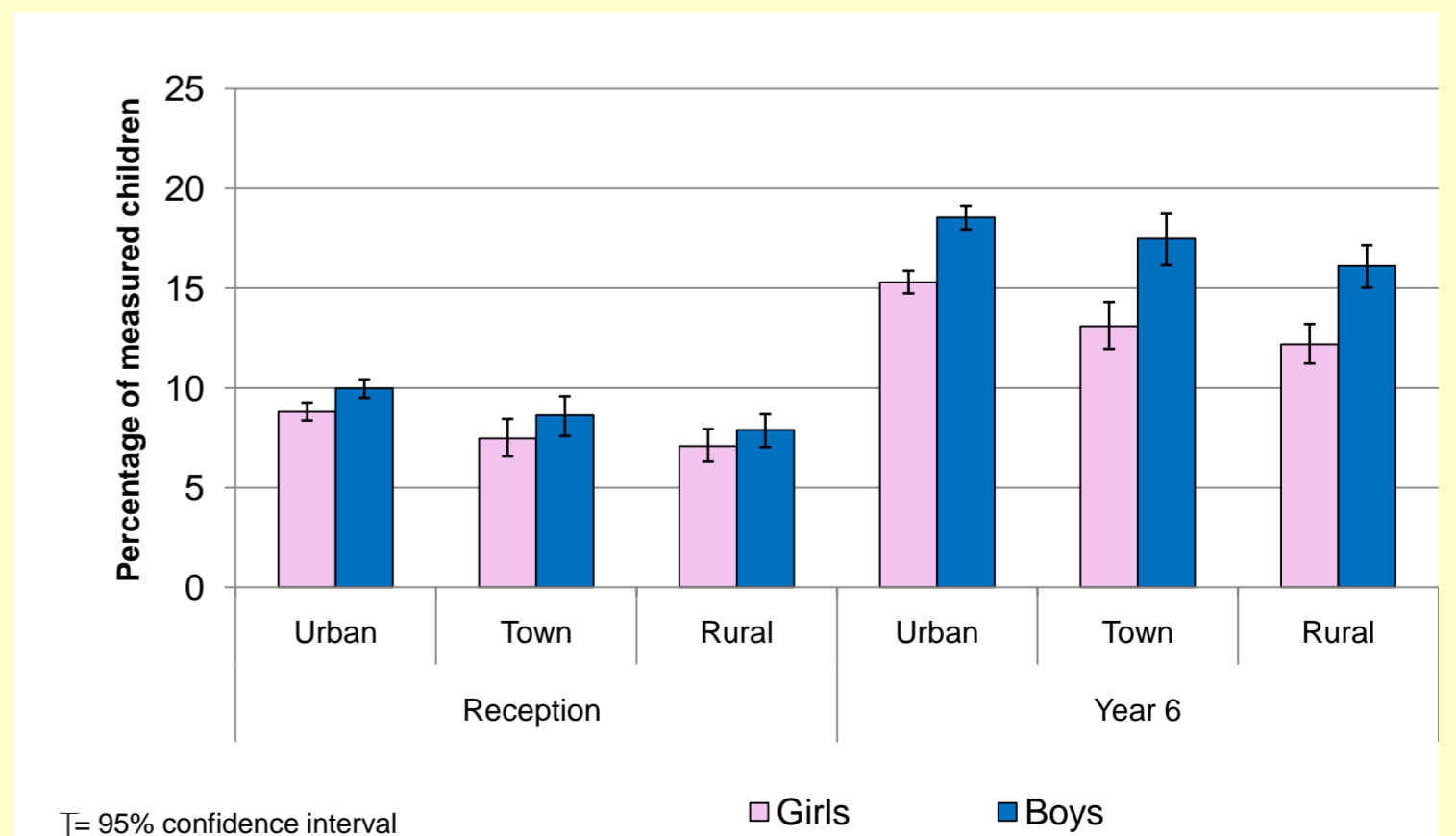
Source data: The Health and Social Care Information Centre, NCMP

Fig 4: Percentage of obese children in Reception by national deprivation deciles in the South West and England, 2008/09



Source: National Obesity Observatory; The Health and Social Care Information Centre, NCMP

Fig 5: Percentage of overweight and obese children by rurality in the South West and England, 2008/09



Source data: The Health and Social Care Information Centre, NCMP